

Life support for your legacy control system

Our wealth of experience

The Rustronic® Mk II control system has been the backbone of your package for many years, but over time it may not perform or function as well as it used to.

This is where we at Greenray are on hand to assist. Our controls team have extensive know-how and technical expertise when working with the Mk II system. In fact, our knowledge spans the whole lifecycle, from its initial concept, through its development, to product application and later operational support, leading eventually onto retrofit replacement.

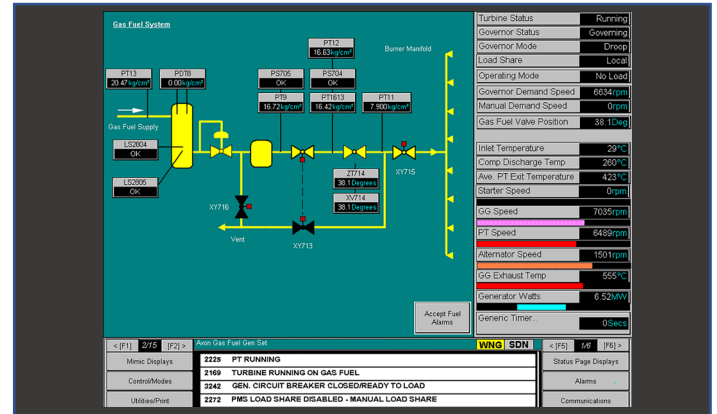
We have also worked with Mk II variants, and product updates covering both Allen Bradley and Siemens PLC platforms.

Our expertise not only covers the SGT fleet of Siemens Gas Turbines but goes beyond, to support the Ruston Packaged LM fleet of GE engines and the ex GEC fleet, where Greenray are the Advanced Partner to Siemens and the OEM service provider.

We have the knowledge and passion to help keep your system and engine running, giving you many more years' of service.



When you need support,
we've got your back.



What's the benefit?

We deliver a solid support capability, based on our teams extensive Mk II experience, in the following areas:

- Extensive product knowledge
- Hardware and Software development
- Governor development
- DLE Control and Improvement
- Commissioning and Technical support

My Mk II isn't cost effective, what now?

Unfortunately, all Mk II components have now been made obsolete by the OEM. We can however, offer:

- HMI PC replacement
- Touchscreen replacement

Where further works are no longer economic, we can also supply our replacement Mk II unit, the M2R, which uses commercially reliable, off the shelf hardware, with the latest in control capability. We can even utilise the existing cabling to make installation smooth and efficient.

Finding out more is easy, just click on the link and we'll give you a dedicated response [Click here](#)

Contact Us

 turbines@greenray.com

 +44 1522 503 300

 Greenray Turbine Solutions Limited, Greenray House, Lincoln Fields Business Park, Paving Way, Whisby Road, Lincoln, LN6 3QW, UK

